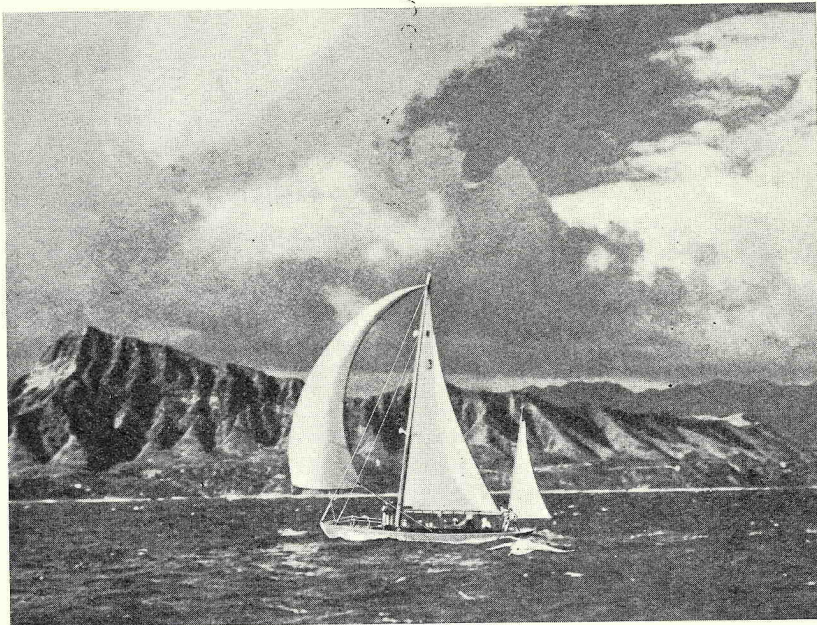
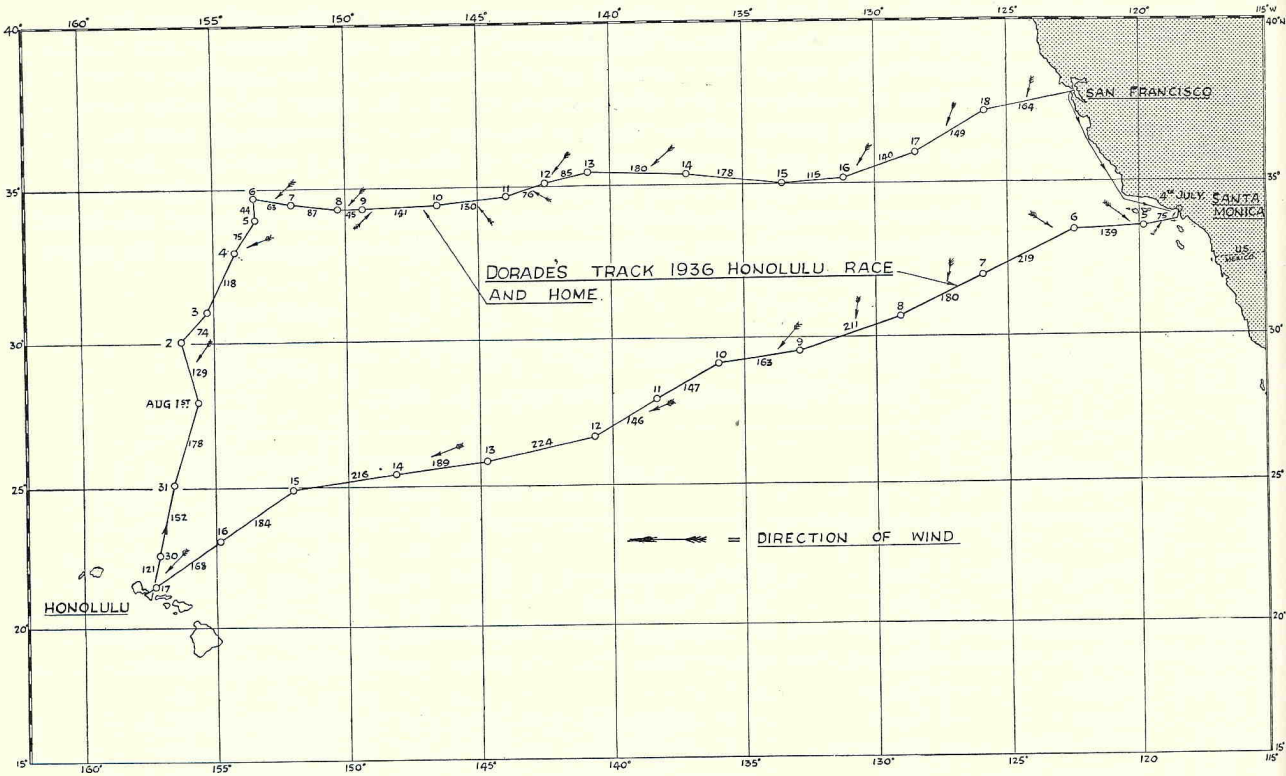


TRANS-PACIFIC YACHT RACE OF 1936

Our old friend *Dorade* kept up her reputation as an ocean racer in no uncertain manner during this race, for she sailed the 2293 miles from Santa Monica to Honolulu in 13 days 7 hours 20 minutes, which averages out at 172.40 miles a day with an average speed of 7.18 knots. She was the first to finish in this race, won in her class, and also had the best corrected time of the entire fleet, and so won a very fine race for James Flood of the San Francisco Yacht Club, who now owns her, though a great deal of credit must go to Myron Spalding, who was skipper and navigator. The chart showing her course gives her best day's run as 224 miles ; the next best is 219 and the third best 216 miles, while her lowest day was 139 miles, which was the first day out, when she was not yet clear of the light weather prevailing under the land.

Dorade lead *Circe* across the finish line at Diamond Head. *Circe* a 59 ft. cutter had to give *Dorade* more than 30 hours and finally dropped into fifth place on corrected times. To *Circe*, however, goes the



DORADE SWEEPS PAST DIAMOND HEAD TO WIN THE 1936 TRANS-PACIFIC RACE

credit for the best day's run of 254 miles, *Dorade* having the next best run of the fleet with her 224 miles, in spite of the fact that *Sartartia*, the 85 ft. schooner, and *Navigator* the 80 ft. schooner, were taking part in the race, all of

which gives an idea of the wonderful seamanlike qualities of *Dorade*. The photographs illustrating this record remind us, that the passage to Honolulu makes the ideal ocean race, for it takes one from the shores of America to the Islands of the Blest, and all the way across one lives on an island, makes one's own laws and customs, and finally to arrive at such an island as Honolulu is to feel that the race has been well worth while, though after a pleasant stay *Dorade* and her crew deserted this lovely island and returned once more to San Francisco. As the chart shows, they took 20 days 16½ hours to sail the 2544 mile homeward course, their average being 123 miles a day and 5.12 knots, for *Dorade* had to come back to windward over the same ocean on which she had run with her spinnaker billowing out during the trans-Pacific race of 1936.

TRANS-PACIFIC RACE, 1936, JULY 4, SAN PEDRO

CLASS A

NAME	LENGTH	RIG	OWNER	CLUB	ELAPSED			CORRECTED				
	OVERALL				TIME			TIME				
	FT.				D.	H.	M.	S.	D.	H.	M.	S.
<i>Navigator</i> -	80	Schooner	G. Harton Singer -	Los Angeles Y.C. -	15	03	30	57	14	15	48	07
<i>Sartartia</i> -	85	Schooner	Charles Jones - -	Pacific Writers Y.C.	Scratch				14	23	31	29

CLASS B

<i>Dorade</i> -	51	Yawl -	James Flood - -	St. Francis Y.C. -	13	07	20	00	11	03	29	44
<i>Santana</i> -	55	Schooner	W. L. Stewart, Jr. -	Los Angeles Y.C. -	13	16	09	01	11	17	32	25
<i>Manuiwa</i> -	60	Schooner	Harold G. Dillingham	Pearl Harbour Y.C.	13	18	40	49	12	06	22	45
<i>Zoe H</i> -	65	Schooner	Ray K. Person - -	California Y.C. -	13	19	50	02	12	08	08	19
<i>Circe</i> -	59	Cutter -	Ray Cooke - -	Seattle Y.C. -	13	07	33	49	12	10	01	11
<i>Adore</i> -	61	Schooner	Lee Tracy - -	Pacific Writers Y.C.	14	19	54	11	13	01	53	21
<i>Paisano</i> -	60	Schooner	Tom Reed - -	Pacific Writers Y.C.	14	15	06	54	13	01	58	45
<i>Marilen</i> -	60	Schooner	Harry B. Allen - -	San Francisco Y.C.	14	19	24	05	13	05	25	52
<i>Bali</i> - -	67	Schooner	L. G. Monroe - -	San Francisco Y.C.	18	02	17	10	15	15	20	27
<i>Destiny</i> -	62	Schooner	Preston Struges - -	Pacific Writers Y.C.	18	14	49	38	17	02	25	19
<i>California</i> -	75	Schooner	J. Polkinghorne - -	Vallejo Y.C. - -	19	05	54	54	17	10	06	12
<i>Gloria</i> -	60	Schooner	William Blackford -	Seattle Y.C. - -	20	04	00	45	18	04	07	35

CLASS C

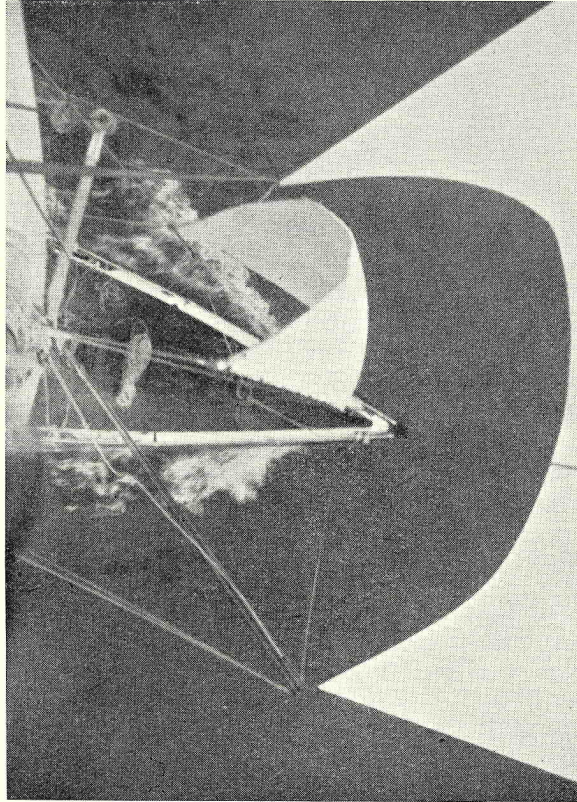
<i>Flying Cloud</i>	45	Yawl -	James McNabb - -	Los Angeles Y.C. -	15	12	46	32	12	17	38	03
<i>Brilliant</i> -	49	Yawl -	Walter Franz - -	Newport Har. Y.C.	16	01	18	55	13	08	36	14
<i>Altair</i> -	47	Yawl -	John P. Blinn - -	Aeolian Y.C. -	16	05	46	17	13	11	02	28
<i>Minerva</i> -	45	Ketch -	Frank Blagen - -	Corinthian Y.C. -	16	04	21	31	13	14	46	14
<i>White Cloud</i>	40	Cutter -	R. R. Pratsch - -	Tacoma Y.C. -	17	00	41	01	13	20	52	41
<i>Naitamba</i> -	34	Yawl -	Richard M. Smith -	Los Angeles Y.C. -	18	07	41	33	14	14	01	10
<i>Lady Jo</i> -	40	Schooner	Samuel Emmes - -	California Y.C. -	18	15	10	25	15	02	42	36

When loaded down for the trans-Pacific Race *Dorade* measured 52 ft. overall by 41 ft. water-line by 10 ft. 3 in. beam, 8 ft. 3 in. draught, and carried 1156 square feet of sail area, her rating being 33.70 ft. under the Honolulu Race rule.

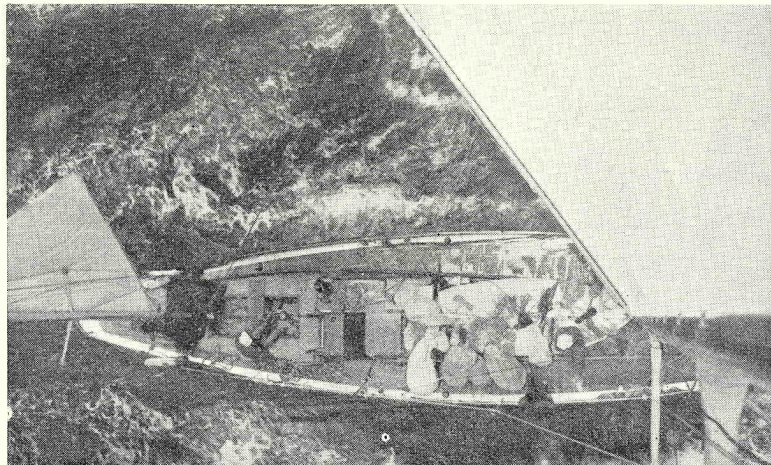
Long distance and ocean racing has now become an active form of sport on both sides of the Atlantic and in the Pacific, and soon it will have spread to every part of the globe, for it is a manly sport, and one hopes that quite soon there will be an International Rule of measurement, and a set of International Racing rules.

So far the Cruising Club of America and the Royal Ocean Racing Club of this country and the trans-Pacific ocean racers and the long-distance racing people in Europe and the Baltic, have not come together under a common rule, and while in some ways this is to be regretted, it is, I imagine all for the best, for the longer the rule is in coming

the more chance it has of being perfect and free from alterations when it finally arrives. But it would seem that the time has now come for it to arrive, as we have put behind us some years' experience of ocean racing. Possibly the



DORADE'S BOW FROM ALOFT



DORADE'S STERN FROM ALOFT

best way of the rule arriving is for the ocean racers all over the world to put their ideas before the committee of the International Yacht Racing Union and the North American Yacht Racing Union, who have had great many years' experience in framing and applying rating rules to yachts, and if a good percentage of ocean racing experts were added to the committee, a perfect International Ocean Racing Rule would soon be arrived at.