



Organizing Authority / Host

The International Audi Melges 20 Class Association (IAM20CA) will be the Organizing Authority (OA) and the Ocean Reef Club will be the event host, in cooperation with Coconut Grove Sailing Club.

SAILING INSTRUCTIONS

1. RULES

- 1.1 The regatta will be governed by the rules as defined in *The Racing Rules of Sailing* (RRS).
- 1.2 The International Audi Melges 20 Class Rules (IAM20CR), including Part 3, Section I (EVENT RULES), will apply except as specifically changed in the Notice of Race (NOR) and in the Sailing Instructions (SIs).
- 1.3 The US Sailing prescriptions to RRS 40 (except as specified in Class Rule C.3.1 (a)), 67, 76.1 and added RRS 61.4, and 82 will apply.
- 1.4 These Sailing Instructions (SIs), including amendments, will take precedence in the case of a conflict with the Notice of Race (NOR). This changes RRS 63.7.
- 1.5 The Equipment Rules of Sailing (ERS) will apply.
- 1.6 For the purposes of RRS 43.2 the anti hiking strap does not constitute a lifeline.
- 1.7 RRS 42.3(c) is modified to allow the gennaker sheet to be pumped without restriction to promote planing.
- 1.8 IAM20CR I.4 (OUTSIDE ASSISTANCE) for coach and support boats will apply (See SI 21 for additional information).

- 1.9 Wind Limits - In accordance with IAM20CR I.3.3, races will not be started when the Race Committee deems that winds are consistently at or above 23 knots or gusting to 25 knots and above. If a race has been started and the wind increases to 23 knots and above, it remains at the discretion of the Race Committee whether or not to abandon the race. Races will not be started unless winds are consistently above 4 knots at the time of the start.
- 1.10 In accordance with rule G3, a boat chartered or loaned for this event may carry national letters or a sail number in contravention of the Class Rules.
- 1.11 IAM20CR I.2 (SAIL LIMITATION MARKS) will apply.
- 1.12 Rule 50.4 will not apply.
- 1.13 If there is a conflict between languages the English text will take precedence.

2. RADIO COMMUNICATION

- 2.1 All competing boats shall carry a hand held VHF radio capable of transmitting and receiving VHF channels (US) for safety purposes and Race Committee communication.
- 2.2 The Race Committee's VHF channel will be **69**.
- 2.3 Race Committee broadcasts concerning its intentions, the course to be sailed; starting times, course changes, OCS hails, etc. are a courtesy only. Failure of the Race Committee to make a broadcast, the timing of a broadcast, or the failure of a boat to hear a broadcast shall not be grounds for redress. This changes RRS 60.1(b) and 62.1(a).
- 2.4 Except from Race Committee VHF channel 69, no competitor shall make or receive radio or cell phone communications commencing from the first Warning Signal of the day until the conclusion of the day's racing for that competitor, except in the case of an emergency.
- 2.5 The Race Committee will attempt to announce its intentions for the day on the Race Committee VHF radio channel (69) at 0930 each morning of the event.
- 2.6 In the event of an onshore Postponement, the Race Committee will make update announcements on the Race Committee VHF radio channel.

3. NOTICES TO COMPETITORS

- 3.1 Notices and Amendments to competitors and race results will be posted on the Official Notice Board located at Town Hall.

4. CHANGES TO SAILING INSTRUCTIONS

- 4.1 Any changes will be posted by 0900 on the day they will take effect, except that any changes in the Schedule of Races will be posted no later than one (1) hour after the latest protest time limit on the day before they take effect (SI 16.2). In the event of no racing on a day, any changes in the Schedule of Races will be posted no later than 1700 hours on the day before they take effect.
- 4.2 Oral changes to the Sailing Instructions may be given on the water. The Race Committee Signal Boat shall display Code Flag "L" and announce the change on the Race Committee

VHF Channel in accordance with RRS 90.2(c). Competitors may also approach the Signal Boat and verbally receive the change while Code Flag "L" is displayed.

5. SIGNALS MADE ASHORE

- 5.1 Signals made ashore will be displayed from the flagpole located near the Town Hall entrance.
- 5.2 Code Flag "L", when displayed ashore signifies that a change in Sailing Instructions or other notice to competitors has been posted on the Official Notice Board.
- 5.3 Code Flag "AP" when displayed ashore means that the start has been postponed. The Warning Signal will be made not less than 60 minutes after the lowering of this signal. This changes RRS race signals.
- 5.4 A Code Flag "B" hoisted with one sound signal signifies 60 minutes before the end of the protest time limit. When lowered with one sound signal, the Protest time has ended.

6. SCHEDULE

6.1 -

Sunday, 8 December (Melges USA Day)

- 12.00 - 17.00 Launch Boats
- 17.00 - 19.30 *Shimmer* Party sponsored by The Lucas Family
at Downeaster, 19 Bayridge Road, Ocean Reef Club
- 20.30 Melges USA Night at Burgee Bar

Monday, 9 December (Ocean Reef Club Day)

- 09.00 - 18.00 Registration & Equipment Controls at Carysforte Grille
- 12.00 - 17.00 Launch Boats
- 18.00 - 22.00 Audi Melges 20 Monday Night Football at Burgee Bar
Dallas Cowboys At Chicago Bears

Tuesday, 10 December (USA Day)

- 09.00 - 17.00 Registration & Equipment Controls at Carysforte Grille
- 10.00 - 17.00 Launch Boats
- 09.30 RC Announcement on VHF Radio
- 11.00 Practice Racing, First Warning
- 17.00 All boats afloat
- 17.30 - 2000 Competitor Meeting & Opening Ceremonies at Buccaneer Island Beach*

Wednesday, 11 December (Race Day 1 - Canada Day)

- 09.30 RC Announcement on VHF Radio
- 11.00 Racing, First Warning
- After Racing Social and Daily Awards at Town Hall*
- 19.30 MOVIE NIGHT at Cultural Center - Captain Phillips

Thursday, 12 December (Race Day 2 - Italia Day)

09.30	RC Announcement on VHF Radio
11.00	Racing, First Warning
After Racing	Social and Daily Awards at Town Hall*
After Racing	Audi Melges 20 Owners Meeting at Town Hall

Friday, 13 December (Race Day 3 - All Other Nationals Day)

9.30	RC Announcement on VHF Radio
11.00	Racing, First Warning
After Racing	Social and Daily Awards at Town Hall*
20.30	Burgee Bar Party

Saturday, 14 December (Race Day 4 - Melges Day)

09.30	RC Announcement on VHF Radio
11.00	Racing, First Warning
15.00	No warning after 15.00
After Racing - 18.30	Haul Out
After Racing	Social and Daily Awards at Town Hall*
19.30	Awards Gala and Closing Ceremony*

Sunday, 15 December

09.00 - 15.00	Haul Out
---------------	----------

Monday, 16 December

16.00	All boats and trailers must be out of Ocean Reef Club before 16.00
-------	--

** Included in entry fee for Audi Melges 20 owner and crew. Additional tickets for all social events will be available for purchase at registration through Ocean Reef Club.*

6.2 Up to ten (10) races are scheduled. The Race Committee (RC) may run fewer races at its discretion. A maximum of three races may be run on any day.

6.3 The Race Committee Finishing Boat will signal its intent to start another race that day by displaying Code Flag "R" at the finish of a race. Code Flag "R" will be lowered with one sound, one minute before the next Warning Signal is made. This changes Race Signals.

6.4 On the final day of the regatta, the Warning Signal for the final race will not be made after 1500 hours.

7. RACING AREA

7.1 The race area will be in Hawk Channel, located approximately 1.5 nm outside the channel leading to the Ocean Reef Club. See Addendum #2.

8. **THE COURSES**

8.1 Courses are described below and in "ADDENDUM #1- COURSE ILLUSTRATIONS".

8.2 Course Designations:

COURSE # 4 - Start - W - OS - Leeward Gate - W - OS - Finish

COURSE # 5 - Start - W - OS - Leeward Gate - W - OS - Leeward Gate - Finish

8.3 The Windward Mark (W) and the accompanying offset mark (OS) shall be left to port.

8.4 Courses will be posted on a Race Committee Signal Boat course board prior to the Warning Signal of each race. The number of the course to be sailed, the approximate magnetic compass bearing, and distance from the starting line to the first mark will be displayed. (This changes *RRS 27.1*)

EXAMPLE: COURSE BOARD DISPLAYED ON R/C SIGNAL BOAT

Course:	4
Distance To W:	1.0
Bearing To W:	120

8.5 Once a race is started, the number of legs shall not be changed.

9. **MARKS**

9.1 The original Windward Mark (W) will be an orange inflatable mark.

9.2 The windward offset mark (OS) will be a round inflatable mark. The offset mark will be laid to port of the Windward Mark, approximately 175 feet away.

9.3 A Leeward Gate will be used and the original Leeward Gate will be orange inflatable marks.

9.4 When changing the next leg of the course (SI Section 12), the new mark, unless the change is for the final leg of course, will be a yellow inflatable mark(s).

9.5 Except when there is a change of course, the Gate will be located to windward of the Starting Line. The Gate may be set after the starting signal.

9.6 If one of the Leeward Gate marks is missing, boats shall round the one existing leeward mark to port.

10. **THE START**

10.1 Races will be started in accordance with *RRS 26*.

10.2 The class flag will be the Audi Melges 20 Insignia on a white flag. Numeral pennant #1 may be substituted for the Audi Melges 20 class flag.

10.3 The starting line will be between a staff displaying an orange flag on the Race Committee Signal Boat and a staff displaying an orange flag on a port end line boat. In the event that the pin end boat is not on station, it will be replaced by an inflatable mark.

- 10.4 If the port end is a Race Committee boat, individual and general recall flags will be displayed by both Race Committee starting line boats.
- 10.5 If a black flag has been displayed as the Preparatory Signal, no part of a boat's hull, crew or equipment shall be in the triangle formed by the ends of the starting line and the first mark during the last minute before her starting signal. If a boat breaks this rule and is identified, she shall be disqualified without a hearing, but not if the race is postponed or abandoned and later restarted or resailed. If a general recall is signaled, the Race Committee shall display her sail number or bow number before the next Warning Signal for that race, and if the race is then restarted or resailed, she shall not sail in it. If she does so, her disqualification shall not be excluded in calculating her series score. This changes RRS 30.3.
- 10.6 An inflatable buoy may be tethered to the stern of the committee boat(s) and will function as an extension of the Race Committee boat. Boats shall not pass between the Race Committee vessel and an inflatable buoy tethered to it.
- 10.7 A boat starting later than four (4) minutes after her starting signal will be scored Did Not Start (DNS) without a hearing. (This changes RRS 35, A4 and A5)

11. RECALLS

- 11.1 In the event of an individual recall or for boats disqualified under RRS 30.3, the Race Committee will attempt to hail the sail number or bow number of boats that are identified as OCS on the Race Committee VHF channel (69). Failure of a boat to see or hear her recall notification, and the timing and order of such hails, or the length of time it takes to make a notification on the Race Committee VHF channel will not be grounds for redress requests. (This is in addition to and changes RRS 29.1, 30.3, 60.1 (b) and 62.1 (a).)

12. CHANGING THE NEXT LEG OF THE COURSE

- 12.1 If the change is for a leeward leg, the new gate marks will be yellow inflatable marks, unless the first change is for the final leg of Course 4, which in that case, the finish line will be in the new position.
- 12.2 If the change is for a windward leg, the new mark will be a yellow inflatable mark, unless the change is for the final leg of Course 5, which in that case, the finish line will be in the new position.
- 12.3 The Race Committee will attempt to broadcast any course changes (VHF channel 69).

13. FINISH

- 13.1 The Finish Line for leeward finishes (Course 4) will be on the opposite side of the Race Committee Boat from the Starting Line. The Finish Line will be between a staff displaying an orange flag on a Race Committee Boat and a nearby inflatable mark, or between staffs displaying orange flags on Race Committee Boats.
- 13.2 The Finish Line for windward finishes (Course 5) will be between a staff displaying an orange flag on a Race Committee Boat and a nearby inflatable mark to port of the Committee Boat, or between staffs displaying orange flags on Race Committee Boats.

14. PENALTY SYSTEM

- 14.1 IAM20CR I.3.1(a) will apply: RRS 44.1(a) and 44.2 are changed as so the penalty shall be a one turn penalty including one tack and one gybe.
- 14.2 Penalties within the zone of the windward mark or on the offset leg may be delayed and taken as soon as possible on the downwind leg. This changes RRS 44.2.
- 14.3 Post-race penalties will apply as follows:
 - 14.3.1 After a race, a boat that may have broken a rule of Part 2 or rule 31 while racing may take a Post-Race Penalty for that incident. The penalty shall be a Scoring Penalty, calculated as stated in RRS 44.3(c) as modified below.
 - 14.3.2 The Post-Race Penalty shall be:
 - (a) 20%, if taken before the protest time limit, or
 - (b) 30%, if taken after the protest time limit but before the beginning of a protest hearing involving the incident.
 - 14.3.3 However, RRSs 44.1(a) and (b) apply.
 - 14.3.4 A boat takes a Post-Race Penalty by informing the Jury in writing and identifying the race number and when and where the incident occurred.
- 14.4 Decisions of the international jury will be final as provided in RRS 70.5.

15. TIME LIMITS

- 15.1 Any race in which no boat finishes within two (2.0) hours of the start shall be abandoned.
- 15.2 Boats failing to finish within 30 minutes after the first boat sails the course and finishes will be scored as a "TLE" and will be scored two additional points more than the number of boats that finished within that time. (This changes RRS 35, 63.1, A4 and A5).

16. PROTESTS AND REQUESTS FOR REDRESS

- 16.1 A boat intending to protest is requested to notify a Race Committee Finish Boat of its intention and the identity of the protested boat(s) as soon as possible after finishing.
- 16.2 Protest forms will be available at the Jury desk located at Town Hall. Protests and requests for redress shall be delivered to the Jury desk within the protest time limit.

The protest time limit is one (1) hour after the Race Committee Finish Boat docks. This is indicated by a Code Flag "B" being hoisted on the official flag pole with one sound signal. When the Code Flag "B" is lowered with one sound signal, the Protest time has ended. Protest hearings will be conducted as soon as possible.

- 16.3 Notices will be posted no later than 15 minutes after the protest time limit to inform competitors of hearings in which they are parties to or named as witnesses. It is each boat's sole responsibility to check the Protest Notice Board to see if she is cited in a protest. Should any party fail to appear when called for a hearing, the Jury may proceed in accordance with RRS 63.3(b). Representatives of boats who are parties to hearings and their witnesses shall remain in the vicinity of the Jury desk until excused by the Jury.

- 16.4 Notices of protests by the Race Committee or Jury will be posted to inform boats under rule 61.1(b).
- 16.5 Breaches of instructions 2, 14.3.4, 19, 20, 21, 23, and 24 will not be grounds for a protest by a boat. This changes RRS 60.1(a). The Jury may impose penalties for these breaches less than disqualification.
- 16.6 On the last day of the regatta a request for reopening a hearing shall be delivered (a) within the protest time limit if the party requesting reopening was informed of the decision on the previous day; (b) no later than 30 minutes after the party requesting reopening was informed of the decision on that day. This changes RRS 66.
- 16.7 On the last scheduled day of racing a request for redress based on a Jury decision shall be delivered no later than 30 minutes after the decision was posted. This changes RRS 62.2.
- 16.8 If the RC posts the results on the official notice board before the protest time limit, a request for redress based on being scored OCS, ZFP or BFD shall be made no later than 30 minutes after the protest time limit. This changes RRS 62.2.
- 16.9 IAM20CR I.3.1(b) will apply. In the case of a protest, the representative from each yacht that attends the protest in the protest room shall be the owner or the Group 1 driver. Group 3 sailors are not allowed in the protest room or to be in contact with the representative in the protest room.
- 16.10 Video and photos taken from any support and/or coach boat shall not be used as evidence at protest hearings. This alters RRS 63.6.

17. PROTEST ARBITRATION

- 17.1 An arbitration meeting will be held prior to a protest hearing for each incident resulting in a protest by a boat involving a rule of Part 2 or rule 31, but only if each party is represented by a person who was on board at the time of the incident. No witnesses will be permitted. However, if the arbitrator decides that RRS 44.1(b) may apply or that arbitration is not appropriate, the meeting will not be held, and if a meeting is in progress, it will be closed.
- 17.2 Based on the evidence given by the representatives, the arbitrator will offer an opinion as to what the Jury is likely to decide:
- (a) the protest is invalid,
 - (b) no boat will be penalized for breaking a rule, or
 - (c) one or more boats will be penalized for breaking a rule, identifying the boats and the penalties.
- 17.3 A boat that may have broken a rule may take a Post-Race Penalty of 30% (as calculated in RRS 44.3(c)) by informing the Jury in writing. However, this penalty may only be taken before the beginning of a protest hearing involving the incident with the Jury.
- 17.4 If a boat asks to withdraw her protest, the arbitrator may act on behalf of the Jury in accordance with RRS 63.1 to accept the withdrawal.

18. SCORING

18.1 IAM20CR I.3.2. (Scoring) will apply:

(a) Three races are required to be completed to constitute a series.

(b) When fewer than six races have been completed, a boat's series score will be the total of her race scores. This changes RRS Appendix A2.

(c) When six or more races have been completed, a boat's series score will be the total of her race scores excluding her worst score.

19. BOW NUMBERS

19.1 Each Audi Melges 20 shall have clearly visible bow numbers as provided by the manufacturer and that Bow Number shall be properly registered when entering the regatta and confirmed during registration. Boats failing to properly display bow numbers may be subject to protest by the Race Committee only. This changes RRS 60.1(a) and RRS 60.3(a).

20. BERTHING & HAUL OUT REQUIREMENTS

20.1 Boats shall be kept in their assigned places in the harbor, as described by the OA during registration and check-in.

20.2 All boats are to remain in the water for the duration of the regatta except with and according to the terms of prior permission of the Principal Race Officer or the Regatta Chairman in the event of a required emergency repair.

21. TEAM AND PRIVATE SUPPORT BOATS

21.1 IAM20CR I.4 (OUTSIDE ASSISTANCE) will apply: A boat shall receive no outside assistance from: support boats, cell phone or radio communication, visual or vocal signaling, transfer of equipment or victuals or otherwise once she has left the dock for the day until she has finished the last race of the day, except in the case of emergency, or motor problems that cause the boat to not make her way to the starting area. A boat should not be towed once she has left the dock for the day until she has finished the last race of the last day, except in the case of emergency or motor problems that cause the boat to not make her way to the starting area. If in the case of a motor problem, the boat shall make every attempt to fix the problem prior to the next day's racing and shall make the boat available for inspection by the Jury, Race Committee or class representative.

Individual coach or support boats shall not approach closer than 300 feet to any boat that is racing, except at mark roundings or the finish line where they shall not approach closer than 100 feet upwind of the windward mark or downwind of the leeward mark, and extensions of the finish line.

At the warning signal for the start, individual coach or support boats shall leave the area being used by the racing boats and may station themselves outside of either the pin or committee signal boat, but no closer to either end than 100 feet.

21.2 When the RC displays AP over H afloat boats may disregard this rule until after the RC drops flag AP ashore or otherwise cancels racing for the day (e.g., AP over A, or N over A).

21.3 Each competitor (skipper) shall register any coach, support and / or spectator boat affiliated with their boat in any way with the OA during Check-in. Only coach, support

and / or spectator boats that have been registered with the OA and carry identification provided by the OA will be allowed in the racing area as permitted by the rules.

21.4 Coach and support boats are required by the Race Committee to monitor the Race Committee VHF Channel 69 and shall abide by all Race Committee or Course Marshall instructions. In addition, they shall provide assistance to any competitor in danger if notified to do so by the Race Committee.

21.5 A boat whose registered coach, support and / or spectator boat has violated any of the above stated rules, or has caused undo wake due to excessive speeds near the race course, may be subject to protest by the Race Committee or the Jury.

22. PRIZES

22.1 IAM20CR 1.5 (PRIZES) will apply:

22.2 The top 5 boats overall will receive prizes.

22.3 The top three placing All Corinthian sailed boats will receive prizes.

22.4 In addition, the following trophies and prizes will be awarded to:

- a. the best boat that includes in the crew at least one sailor under 21.
- b. the best boat that includes one female sailor
- c. the best boat that has an all female crew
- d. the best boat that has a helmsman under 21 throughout the event
- e. the best boat that has a Masters helmsman over 60 throughout the event.
- f. The winner of each race.

22.5 Additional prizes may be awarded at the discretion of the RC and OA.

23. SAFETY REQUIREMENTS

23.1 Each boat shall check in before the Warning Signal of their first race of the day by sailing past the stern of a Race Committee boat displaying Code Flag L in the starting area, and hailing their bow number until acknowledged by the Race Committee.

23.2 A boat that retires from a race or does not intend to start a scheduled race shall promptly report this to the Race Committee via hailing or calling on the Race Committee VHF channel 69, and receive acknowledgement.

23.2 **Boats shall not sail in the privately marked channels as they depart or enter Ocean Reef Club's harbor entrance channel.**

24. MEDIA RIGHTS

Each participant shall acknowledge that all media and commercial rights belong exclusively to the organizing authority and the IAM20CA and shall grant to the OA and IAM20CA the unrestricted right and permission to use and publish any biographical information, text and images arising from the Championship including name, voice, image, likeness, biographical material as well as representations of the boats in any media worldwide (being television, print and digital media), including video footage, for the sole purposes of advertising, promoting, reporting and disseminating information regarding the **Audi Melges 20 World Championship** and the participants in the regatta.

The OA will exercise these rights in its sole discretion or as it may agree with the event sponsors. Participants shall not reproduce, publicly communicate or distribute images of the race in any way or form without previous authorization from the OA or the IAM20CA.

25. DISCLAIMER OF LIABILITY

25.1 Liability Waiver Form - As a condition of entry, each owner, skipper and individual participating crew member shall sign a liability waiver/media release. The fully executed Liability Waiver Form shall be submitted at registration prior to racing. The Liability Waiver Form will be posted on the regatta website and available at registration. By participating in this event, each competitor agrees to release the race organizers from any and all liability associated with such competitor's participation in this event to the fullest extent permitted by law.

25.2 Sailing is an activity that carries with it an inherent risk of damage and injury. Competitors participate in the regatta entirely at their own risk. See RRS 4, Decision to Race. The International Audi Melges 20 Class Association, OROC and any sponsors and affiliated companies, and each of their officers, directors, employees, sponsors and agents (collectively as "Releasees"), will not accept any liability for material damage or personal injury or death sustained in conjunction with or prior to, during, or after the regatta.

26. INSURANCE

26.1 Each participating boat shall be insured with valid third-party liability insurance with a minimum cover of \$1,000,000 per event or the equivalent if expressed in other currency. Proof of insurance shall be provided to the registration staff during the specified registration time.

Official Event Website

www.audimelges20worlds.com

Official Class Website

www.melges20.com

Race Officials:

Event Chairman: Hank Stuart
Email: Hstuart8m@gmail.com
M: +1 (585) 414-6105

Race Committee PRO: Bruce Golison (USA)
Email: bruce@golison.com

Jury Chair: Willii Gohl (IJ-GER)
Email: williigo@gmx.net

International Audi Melges 20 Class:

Joy Dunigan
Email: classadmin@melges20.com
T: +1 (912) 756-6706
M: +1 (912) 398-5776
F: +1 (912) 756-6728

Luisa Bambozzi
Email: eurofleet@melges20.com
T: +39 02 94435078
M: +1 (912) 398-5776
F: +39 02 94435079

ADDENDUM #1 - COURSE ILLUSTRATIONS

COURSE # 4 (Leeward Finish)

Start - W - OS - Leeward Gate - W - OS - Finish



Start ⌘ ----- ⌘ **R/C** ⌘ ----- ⌘ **Finish**

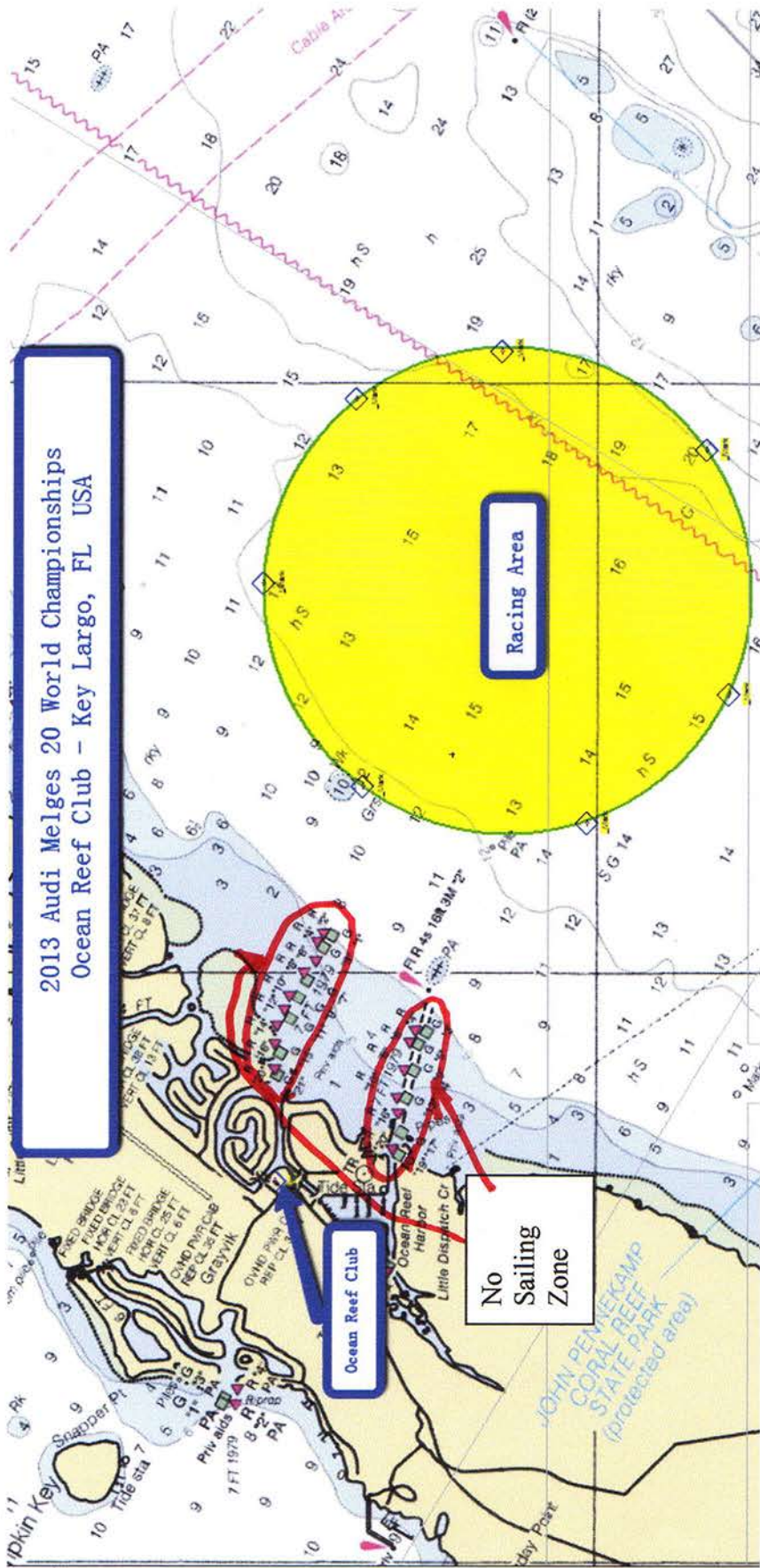
COURSE # 5 (Windward Finish)

Start - W - OS - Leeward Gate - W - OS - Leeward Gate - Finish

Finish ⌘ ----- ⌘ **R/C**



Start ⌘ ----- ⌘ **R/C**



23.2 Boats shall not sail in the privately marked channels as they depart or enter Ocean Reef Club's harbor entrance channel.

This chart is not to be used for navigation.