



2018 USSCA NATIONAL CHAMPIONSHIP AT MIDWINTERS

March 21 – 24, 2018

Panama City, FL - USA

Organizing Authority: St. Andrews Bay Yacht Club
Endorsed by ISCA

SAILING INSTRUCTIONS

(Release Date: March 15, 2018)

1. RULES

- 1.1 The regatta will be governed by the rules as defined in *The Racing Rules of Sailing*.
- 1.2 Racing rule G1.1 (b) will be changed as follows: Rule G1.1 (b) is deleted.
- 1.3 If there is a conflict between languages the English text will take precedence.

2. NOTICES TO COMPETITORS

Notices to competitors will be posted on the official notice board(s) located outside of the Sailing center.

3. CHANGES TO SAILING INSTRUCTIONS

Any change to the sailing instructions will be posted before 09:00 Hrs. on the day it will take effect, except that any change to the schedule of races will be posted before 20:00 Hrs. on the day before it will take effect.

4. SIGNALS MADE ASHORE

- 4.1 Signals made ashore will be displayed at the mast on the front lawn.
- 4.2 When flag AP is displayed ashore, "1 minute" is replaced with "not less than 45 minutes" in the race signal AP.

5. SCHEDULE OF RACES

5.1 Dates of racing:

Wednesday Mar. 21	14:00 Hrs.	Practice race
Thursday Mar 22	09:30 Hrs.	Skippers Meeting
	11:25 Hrs.	First warning
Friday Mar. 23	10:55 Hrs.	First warning
Saturday Mar. 24	10:55 Hrs.	First warning

	TBD after racing	Awards ceremony
--	------------------	-----------------

5.2 Multiple back to back races will be sailed each day.

5.3 To alert boats that a race or sequence of races will begin soon, the orange starting line flags will be displayed with one sound at least five minutes before a warning signal is made.

5.4 On Saturday, March 24, no warning signal will be made after 14:00 hours.

6. CLASS FLAGS

The class flag will be a purple flag

7. RACING AREAS

The racing area will be in the waters of St. Andrews Bay, (Attachment #1)

8. THE COURSES

8.1 The diagrams in Attachment #2 show the courses.

8.2 The course number and approximate heading to the mark will be displayed on a course board on the stern of the signal boat.

8.3 If a gate mark is missing, the remaining mark should be left to port.

9. MARKS

9.1 Mark 1 will be a green, inflatable pyramidal buoy.

9.2 Mark 1a will be an orange inflatable spherical buoy.

9.3 Marks, 2a and 2b will be orange inflatable pyramidal buoys.

9.4 New marks, as provided in instruction 12.1, will be yellow inflatable pyramidal buoys.

9.5 The starting marks will be race committee vessels displaying orange flags.

10. AREAS THAT ARE OBSTRUCTIONS

There are no areas that are obstructions on the race course.

11. THE START

11.1 Races will be started by using rule 26 with the warning signal made 5 minutes before the starting signal.

11.2 The starting line will be between staffs displaying orange flags on the starting marks.

11.3 A boat starting later than four (4) minutes after her starting signal will be scored Did Not Start without a hearing. This changes rule A4.

12. CHANGE OF THE NEXT LEG OF THE COURSE

12.1 To change the next leg of the course, the race committee will lay a new mark (or move the finishing line) and remove the original mark as soon as practicable. When in a subsequent change, a new mark is replaced, it will be replaced by an original mark.

13. THE FINISH

The finishing line will be between staffs displaying orange flags on RC vessels or between a staff displaying an orange flag on a RC vessel and course side of an orange buoy.

14. PENALTY SYSTEM

14.1 Appendix P will apply.

14.2 Penalties for breaking a rule other than those of Part 2, Rule 31 or Rule 42 will be determined by the jury. Penalties may be less than disqualification if the jury so decides. The scoring abbreviation for a discretionary penalty imposed under this instruction will be DPI.

- 14.3 If a judge witnesses an incident in which a boat protests another boat (hails "protest" at the first reasonable opportunity) as a result of the incident, and no boat takes a penalty, the judge may signal to impose a penalty by displaying a red flag with one long sound signal and hailing the sail number(s) of the boat(s) penalized. A boat so penalized by a judge shall take a penalty per RRS 44.2. If she fails to take it, she shall be disqualified without a hearing.
- 14.4 A boat involved in an incident where a judge signals under SI 14.3 is not entitled to a hearing. This changes RRS 60, 61, 62, 63, 64.1, 65 and 66.
- 14.5 Decisions of the International Jury will be final as provided in RRS 70.5.

15. TIME LIMITS AND TARGET TIMES

15.1 Time limits and target times are as follows:

Race Time Limit	Mark 1 Time Limit	Target Time
90 minutes	30 Minutes	55 Minutes

If no boat has passed Mark 1 within the Mark 1 time limit the race will be abandoned. Failure to meet the target time will not be grounds for redress. This changes rule 62.1(a).

16. PROTESTS AND REQUESTS FOR REDRESS

- 16.1 Protest forms are available at the race office located in the Sailing center. Protests and requests for redress or reopening shall be delivered there within the appropriate time limit.
- 16.2 The protest time limit is 90 minutes after the last boat has finished the last race of the day or the race committee signals no more racing today, whichever is later.
- 16.3 Notices will be posted no later than 30 minutes after the protest time limit to inform competitors of hearings in which they are parties or named as witnesses. Hearings will be held in the protest room in the Sailing Center beginning at the time posted.
- 16.4 Notices of protests by the race committee or protest committee will be posted to inform boats under rule 61.1(b).
- 16.5 A list of boats that, under instruction 14.1, have been penalized for breaking rule 42 will be posted no later than 30 minutes after the protest time limit.
- 16.6 Breaches of instructions 18, 21, 23, 25 and 27 will not be grounds for a protest by a boat. This changes rule 60.1(a).
- 16.7 On the last scheduled day of racing a request for redress based on a protest committee decision shall be delivered no later than 30 minutes after the decision was posted. This changes rule 62.2.
- 16.8 Decisions of the International Jury will be final as provided in rule 70.5.

17. SCORING

- 17.1 For the Championship Series, one (1) race shall be completed to constitute a series.
- 17.2 A maximum of eleven (11) races will be sailed.
- 17.3 When fewer than six (6) races have been completed, a boat's series score will be the total of her race scores.
- 17.4 When six (6) to eleven (11) races have been completed, a boat's series score will be the total of her race scores excluding her worst race.

18. SAFETY REGULATIONS

- 18.1 Check-out and check-in Procedures: before the warning signal on the first race each day, all boats shall sail by the stern of the race committee signal boat, on starboard, hail her sail number and obtain the acknowledgment of the race committee. Boats that fail to check-in will be scored DNS. This changes Rule A5.
- 18.2. A boat that retires from a race shall notify the race committee as soon as possible. Failure by any competitor to inform the Race Committee that they have retired from racing may

result in a 20 percent penalty in the competitor's last completed race. This also changes Rule A5.

19. REPLACEMENT EQUIPMENT

Substitution of damaged or lost equipment will not be allowed unless authorized by the ISCA measurer or a Class representative before the first race or by the race committee (the Principal Race Officer or his designate) thereafter. Requests for substitution shall be made to the race committee at the first reasonable opportunity.

20. EQUIPMENT AND MEASUREMENT CHECKS

A boat or equipment may be inspected at any time for compliance with the class rules and sailing instructions. On the water, a boat can be instructed by an ISCA measurer or his designate to proceed immediately to a designated area for inspection.

21. EVENT ADVERTISING

The Organizing Authority may require all participating boats to display the event sponsor's advertising in accordance with World Sailing Regulation 20.

22. OFFICIAL BOATS

Official boats will be marked as follows:

Race Committee:	Blue Flag with RC
Jury Vessels:	Code Flag "J"
Security Vessels:	Green Flags

Failure of an official boat to display the designated flag shall not be grounds for redress. This amends rule 62.1(a).

23. SUPPORT BOATS

- 23.1 Support boats include those carrying team leaders, coaches and other personnel that interact with competitors.
- 23.2 Coach/support boats must register prior to the first competitor's meeting on the first day of racing with the Organizing Authority and fly a yellow flag with a number provided by the Organizing Authority at all times while on the water. Coach/support boats shall carry a working VHF radio and monitor the race.
- 23.3 Support boats shall stay outside the racing area from the time of the preparatory signal until all boats have finished or retired or the race committee signals a postponement, general recall or abandonment. The racing area is defined as no less than 100 meters from any boats that are racing and outside the laylines from the marks defining the course.
- 23.4 Support boats shall remain 50 meters below the starting line between the preparatory and starting signals. After the starting signal, they may only proceed to the windward mark up the left side of the course and must return to the leeward mark via the same side. At the finish line, they must remain 100 meters to windward of the extensions of the finish line.
- 23.5 If a support boat does not comply with applicable rules, restrictions and/or instructions, a discretionary penalty may be applied by the International Jury to some or all associated competitors and may include restrictions on the movement of their support boat.
- 23.6 Support boats may be required to act as safety boats upon instruction from a race official.

24. PRESS/PHOTOGRAPHY BOATS

- 24.1 Press or photography boats may be supplied or authorized by the organizing authority.
- 24.2 Press or photography boats shall display a yellow flag.
- 24.3 Press/photography boats shall stay outside the lay lines to the marks defining the course while boats are racing and shall not maneuver so to interfere with or influence boats racing.

24.4 Press/photography boats shall obey instructions related to boat positioning or operations from on-water race officials.

25. TRASH DISPOSAL

Trash may be placed aboard support or official boats.

26. BERTHING

Boats shall be kept at the regatta site and in the spots assigned by the organizing authority.

27. RADIO COMMUNICATION

Except in an emergency, a boat shall neither make radio transmissions while racing nor receive radio communications not available to all boats. This restriction also applies to mobile telephones.

28. PRIZES

Prizes will be given as follows subject to entry numbers:

- a) Top five finishers
- b) Highest placed Female finisher (if the top finisher is male) or the highest placed Male finisher (if the top finisher is Female)
- c) Highest placed Youth
- d) Highest placed Master (40+)

29. DISCLAIMER OF LIABILITY

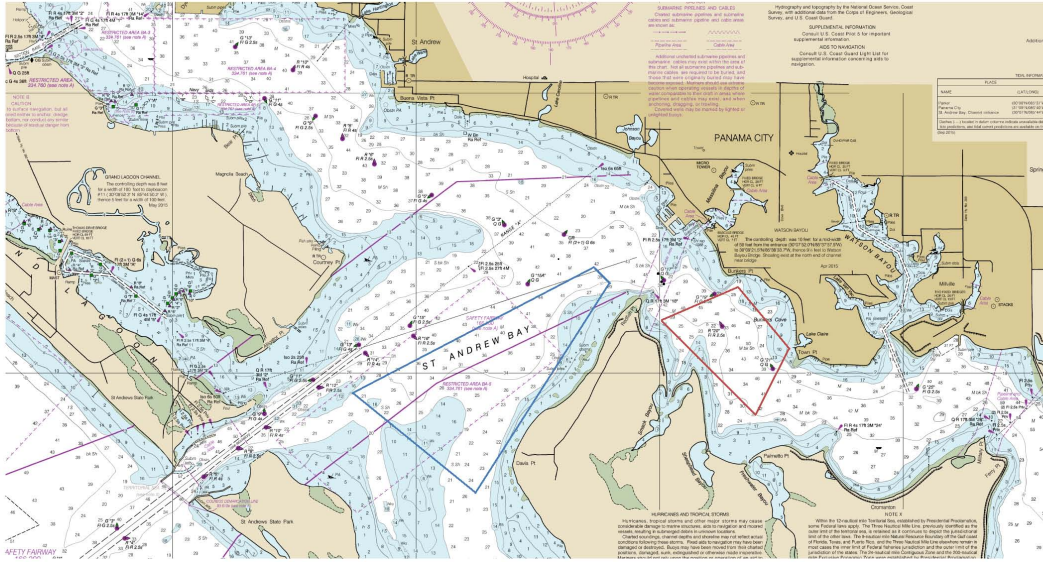
Competitors participate in the regatta entirely at their own risk. See rule 4, Decision to Race. The organizing authority will not accept any liability for material damage or personal injury or death sustained in conjunction with or prior to, during, or after the regatta.

30. REQUESTS FROM OFFICIALS

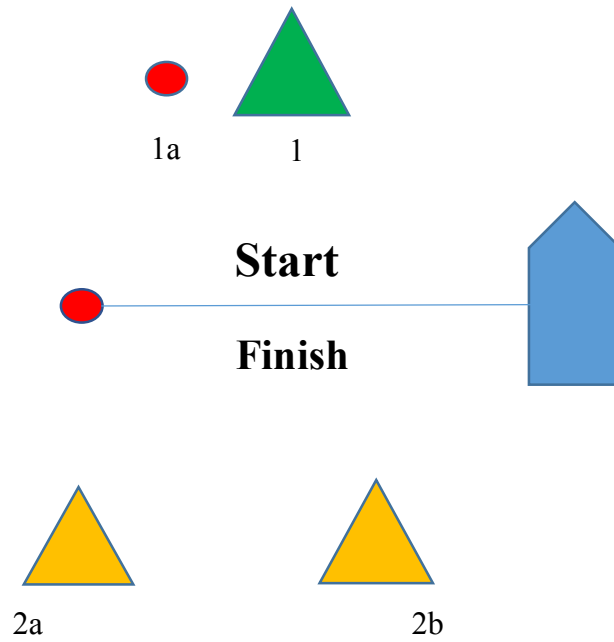
Team Leaders, coaches, support personnel and competitors shall comply with reasonable requests from Race Officials.

Attachment 1

Racing Area – St. Andrews Bay



Attachment 2: Courses



Courses

- #1 Start,1,1a,2a or 2b, Finish
- #2 Start,1,1a,2a or 2b,1,1a,2a or 2b, Finish
- #3 Start,1,1a,2a or 2b,1,1a,2a or 2b,1,1a,2a or 2b,Finish